

Special Engine Feet - Repower Accessory Kits

Solé Diesel introduces new packs with tailored brackets, specially developed for repowering. These new frames will help your client when changing his old engine, avoiding extra costs corresponding to the engine bearer's modification.

These packs consist of brackets with customized drilled holes (adjusted upon the old engine dimensions), as well as the needed bolts. The whole support pack is provided properly machined and painted (4 pieces)

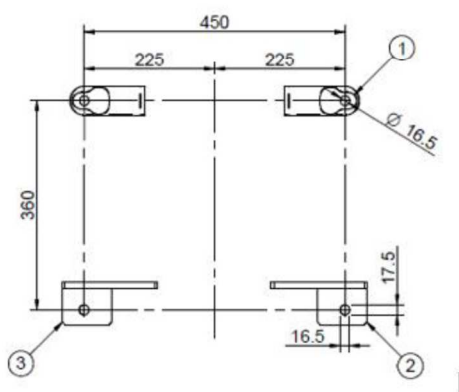
By using these packs, new Solé Diesel engine installations will be an easy and economical task



See the following charts, with repowering possibilities, including the pack references which must be ordered in each case.

Repowering from Sole Diesel to Sole Diesel

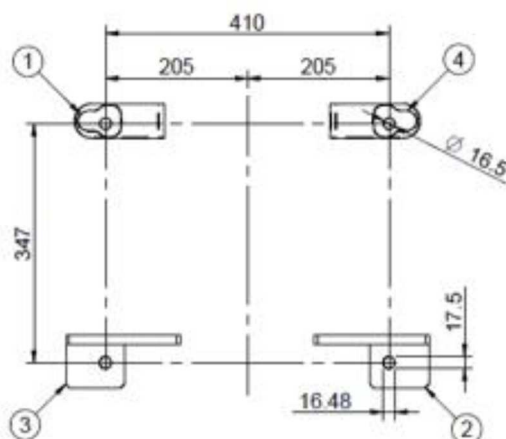
	MINI-17	MINI-29	MINI-33	MINI-44	MINI-55
MINI-1-2-3	13810050.6	17610050.6			
MINI-10	13810085	13910005			
MINI-11	13810084	13910006			
MINI-17 V2_V3	13810084	13910006			
MINI-17 V4	13810086	13910007			
MINI-18	13810089				
MINI-23		13910008	17210038		
MINI-26		13910009	17210039		
MINI-29 V0_V2_V3		13910009	17210039		
MINI-29 V4			17210040		
MINI-32			17210045	17310013	
MINI-33 V0_V1_V3			17210046	17310014	
MINI-34			17210045	17310013	
MINI-48				17310015	17310015
PERKINS-4108					17710022
SM-615					17710023



Repowering from SolÃ© Diesel MINI-23 to SolÃ© Diesel MINI-33 with Supports Pack 450x360 MINI-33, Ref. 17210038

Repowering from Volvo Penta to Solé Diesel

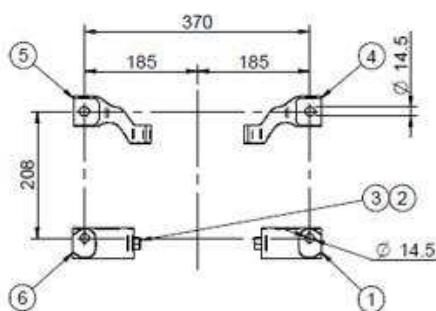
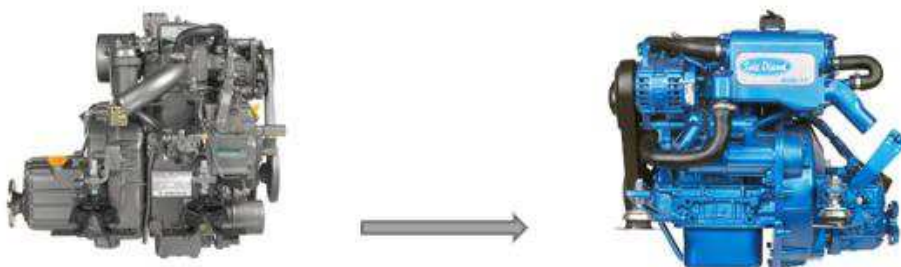
	MINI-17	MINI-29	MINI-33	MINI-44
2001	13810094			
2002	13810093			
2003			17210047	
2003 Turbo			17210047	
MD6A	13810096			
MD7A	13810096			
MD11			17210054	
MD 11C			17210054	
MD17				17310024
MD 2010		13910012		
MD 2020		13910023		
MD 2030			17210048	
MD 2040				17310023
D1-13		13910023		
D1-20			17210048	
D1-30			17210053	
D2-40				17310022



Repowering from Volvo
Penta MD 2030 to Solé
Diesel MINI-33 with
Supports Pack 410x347
MINI-33 Ref. 17210048

Repowering from Yanmar to Solé Diesel

	MINI-17	MINI-29	MINI-33	MINI-44
1GM	13810097			
1GM10	13810097			
1GM10V	13810099			
2GM20	13810098			
2GM20F	13810098			
2GM20FV	13810109			
2QM20H			17210055	
2YM15		13910022		
3GM30FV		13910024		
3HM		13910028		
3HM 35		13910028		
3HMF		13910028		
3JH2-E			17210056	
3JH2-TE				17310028
SB12/SB12G	13810112			
SB8/SB8G	13810110			



Repowering from Yanmar
1GM10 to Solé Diesel
MINI-17 with Supports
Pack 370x208 MINI-17
Ref. 13810097

Clarification:

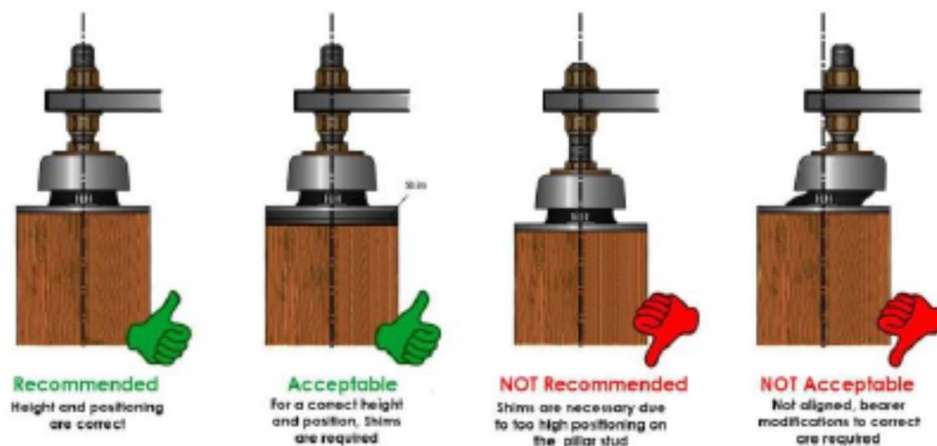
- Packs developed for standard gearboxes. Lead time: 7 days.
- Customized pack developments, not included in previous charts: price will be individually quoted. Lead time: 1 month.

When repowering, we will offer you the pack which best meet your needs. If the required pack is not listed as a standard one, our engineers will proceed with your request and will analyze the development of a new customized pack. Please, fill the form in the link below when placing a customized order. Several engine and boat details will be required.

Form link – [Click here](#)

Once the form is checked, our technical department will provide the packs accordingly and we will include them in the engine box. Then, you will be able to install them easily.
Lead time: 7 days for standard packs and 1 month for customized packs.

In addition to this, we would like to remind you about our shims packs, designed and developed to complement the repowering, as well as to simplify the engine mounts line-up.



Solé Diesel recently included to its accessories range the new height levellers, developed and suitable for the engine replacements. These shims provide a precise and secure adjustment. They are made of an anticorrosion covering with an electrolytic galvanizing, 12/15 microns thick.

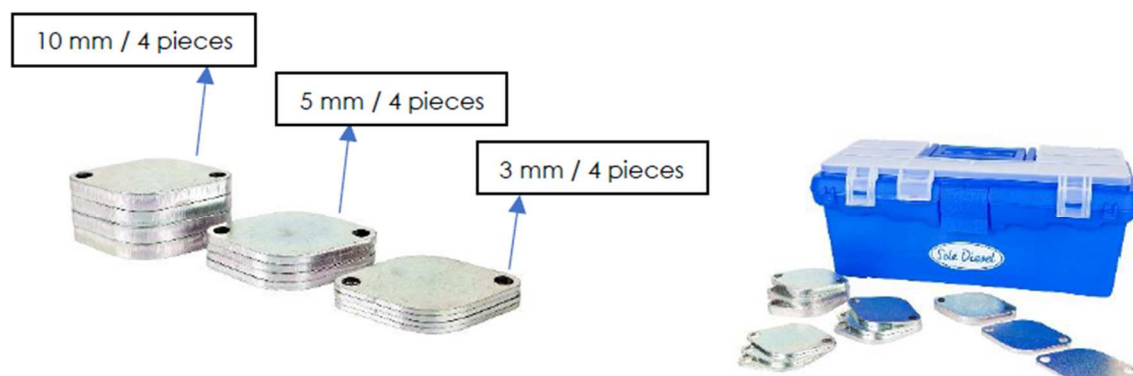
The DIN rule about ships and high-speed light watercrafts (Shipment Jan 2001-Point4-Chapter3-Section1-F202), establishes that standard height adjustment systems are not acceptable for levelling due to the cyclic bending moments beared by the studs and screws. For this reason, placing shims under the silentblocks is the recommended method for a correct levelling of the Anti-vibration Mounts

The range consists of 3 packs, suitable for all the Solé Diesel engines, Solé Diesel engines with Deutz base are not included.

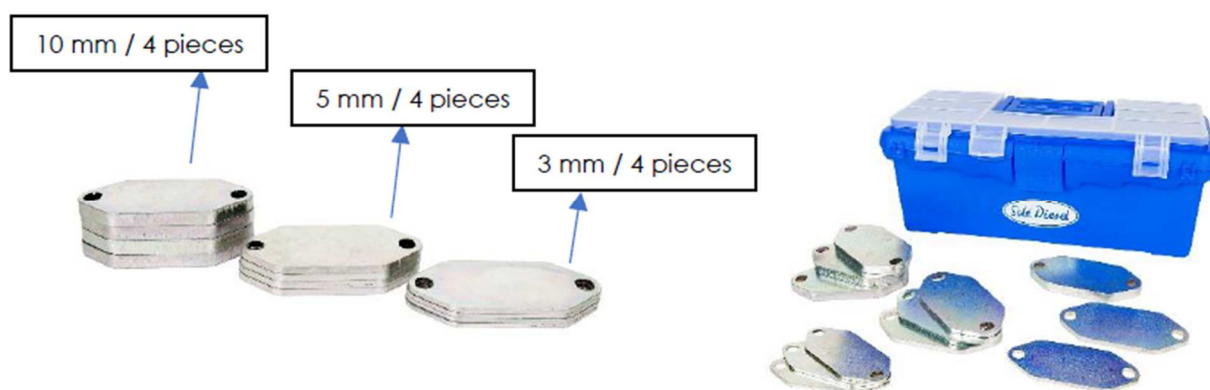
ENGINE	PACK PART LIST
MINI-17	61638100
MINI-29	
MINI-33	61654100
MINI-44	61673101
MINI-55	
MINI-62	
SK-60	
MINI-74	
SM-82	
SM-94	
SM-103	

All the packs include the box and 12 shims (3 different sizes* / 4 pieces per size)

Ref. 61638100



Ref. 61654100



Ref. 61673101

